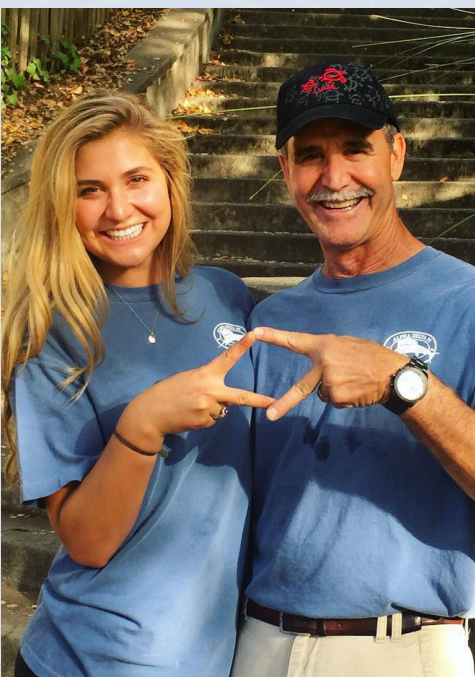


# Alpha Delta Pi

BE THE FIRST



WELCOME HOME TO  
ALPHA DELTA PI

# WELCOME HOME ALPHA DELTA PI PARENTS AND FAMILIES!

It is a privilege to welcome you to the Alpha Delta Pi family. I am delighted your daughter chose to come home to Alpha Delta Pi!

Alpha Delta Pi is the oldest secret society in the world for college women and is dedicated to lifelong personal growth and friendships. We have over 150 collegiate chapters throughout the United States and Canada offering education and leadership development in addition to sisterhood, service and social events.

Alpha Delta Pi continues to enrich my life with leadership, educational, philanthropic, and social opportunities, and it is my sincere hope that your daughter will feel the same way about her membership in Alpha Delta Pi.



Emily Erkel  
International President





## OUR HISTORY

For more than 169 years, extraordinary women have called Alpha Delta Pi home. Originally called the Adelphean Society, Alpha Delta Pi is the first secret society for women in the world and forged the way for women in the fraternity system.

Our founding took place on May 15, 1851, at Wesleyan Female College in Macon, Georgia—the first college in the world chartered to grant degrees to women.

We think it is appropriate that Alpha Delta Pi was founded at an institution so deep in women's history itself. We are extremely proud of our heritage and of the leadership shown by our early members—who progressively and unconventionally made the decision to further their education by attending college. These women had the foresight and leadership to begin a sorority movement that would endure for generations to come.

Each point of our diamond represents characteristics important to the members of our organization and serves as a constant reminder of who we strive to be as we wear our badge: strengthening character and personality, watching our attitudes toward fellow beings, recognizing the value of high educational standards, and developing faith and loyalty.



THE ADELPHANS IN 1895



# Be the First

In 1851 Alpha Delta Pi was founded as the Adelphean Society, the first secret society for women. Since then, our organization and our members have been forging paths on campuses and in communities as leaders and champions.



## In 1851

Alpha Delta Pi was founded at Wesleyan Female College, the first college that was established to grant degrees to women. The college was established in 1836, with its first graduating class in 1840.

Azure blue and white are the official colors of Alpha Delta Pi. Blue is symbolic of friendship, the basic spirit upon which Alpha Delta Pi is founded. White symbolizes sincerity and truth.

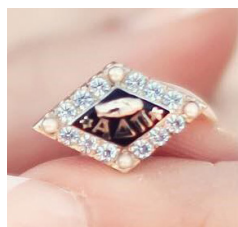
Viola Ross Napier, Alpha—Wesleyan, was the **first female legislator in Georgia**. She ran for office in 1922, the first year women were allowed to participate.

In 1991 Alpha Delta Pi implemented Total Membership Education, becoming the **first sorority to eliminate pledgship**.

In 2015 Alpha Delta Pi became the first NPC sorority to join the Fraternal Health & Safety Initiative to address sexual misconduct, binge drinking, and hazing.

## 4

Each point of our four-pointed diamond represents characteristics important to each member of our organization and serves as a constant reminder of who we strive to be as we wear our badge.



Francine Irving Neff, Alpha Nu—New Mexico, was the first woman appointed to the Hershey Food Corporation Board of Directors and also served as **United States Treasurer**.



In 1957, ADPi's Grand Convention took delegates out of North America—the first time for any Greek organization—to the Emerald Beach Hotel in Nassau, Bahamas.



Mildred "Micky" Axton, Alpha Eta—Kansas State, was one of the first three Women

Airforce Service Pilots test pilots and was the

**first woman to fly a B-29.**

Dr. Jessie Gray, Beta Zeta—Toronto charter member, was the first woman elected to the Royal College of Surgeons of Canada, 1942. She was known as the **Canadian "First Lady of Surgery."**



Keeping families close

Alpha Delta Pi Sorority was the first corporate sponsor of the **Ronald McDonald House Charities**.

We have been their model corporate sponsor since 1974.

## Olympic gold medalist

Catie Ball Condon, Gamma Iota—Florida, was the first head coach of the University of Florida Women's Swim Team.

Carol Warner Shields, Phi—Hanover, wrote *The Stone Diaries*, which was the first (and only) book to win both the **Pulitzer Prize for Fiction** in the US and the Governor General's Award for English Language Fiction in Canada.

## 148

Of our 158 chapters earned a chapter GPA above a 3.0. Fifty of those chapters posted the highest chapter GPA of all sororities on campus, and 136 have a chapter average above 3.14.

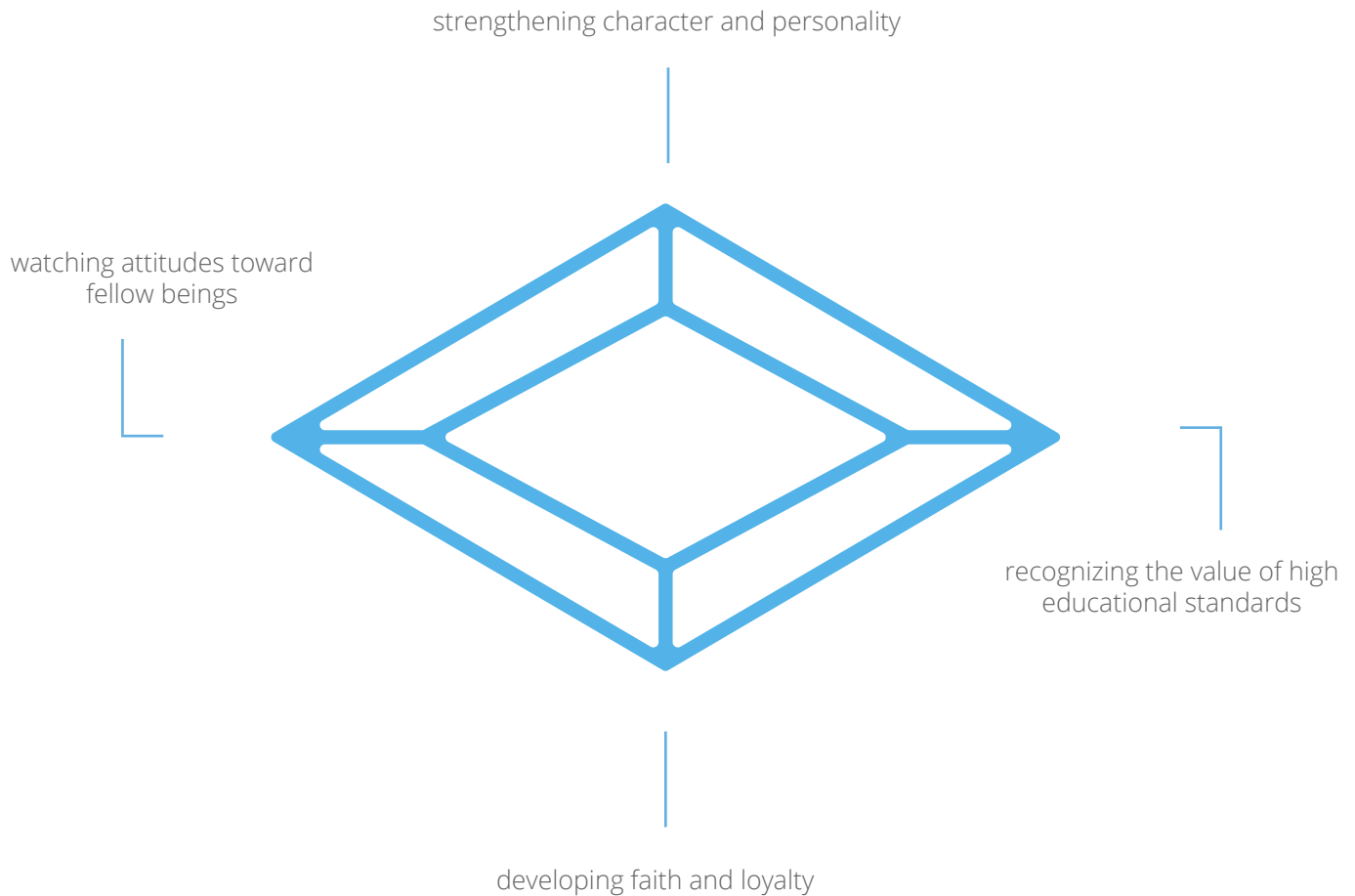




# Symbols

## THE FOUR-POINTED DIAMOND

Each point of the diamond represents characteristics important to each member of our organization and serves as a constant reminder of who we strive to be as we wear our badge:



## ADDITIONAL SYMBOLS

### Colors

Azure blue and white are the official colors of Alpha Delta Pi. Blue is symbolic of friendship, the basic spirit upon which Alpha Delta Pi is founded. White symbolizes sincerity and truth. Our brand palette includes several complimentary colors as well.



### Flower

The Woodland Violet, which grows wild, is the official flower of ADPi.



### Mascot

Alphie the Lion is Alpha Delta Pi's mascot, symbolizing courage and strength.





# We Offer...

## PERSONAL DEVELOPMENT

We strive to offer our members educational opportunities that promote growth and lifelong learning and develop competencies that will be used far beyond the classroom and college experience. We are pleased to offer a variety of experiences for members to learn, grow, and develop their leadership skills within our sisterhood. In addition to chapter programming and education, members have the opportunity to engage in leadership development and training available through the international organization.

## LEADERSHIP PROGRAMS

Leadership programming is tailored to the individual and is offered both nationally and regionally in one of our four districts across the United States and Canada. We are pleased to offer a variety of experiences for members to make healthier, safer choices within our sisterhood. In addition to chapter programming and education, members have the opportunity to engage with training and resources available through the international organization.

## SCHOLARSHIPS & GRANTS

The Alpha Delta Pi Foundation is proud to award approximately 130 competitive academic scholarships each year with a total of more than \$190,000 in scholarships. Award amounts vary up to \$3,000, and scholarships are available for undergraduate, graduate, and continuing education study.

## COMMUNITY SERVICE

The mission of the Alpha Delta Pi Foundation Philanthropy Program is to promote commitment to philanthropy as a life-long value and enable members to share their time, talents, and financial resources to improve the well-being of their communities. Ronald McDonald House Charities (RMHC) is the international philanthropy of Alpha Delta Pi and provides a "home away from home" for children receiving medical treatment and their families. Families stay at no cost but are asked to make a donation of up to \$25 per day. Families are never turned away, so if it's not possible for them to pay, the fee is waived.

The Alpha Delta Pi Foundation manages our philanthropic partnership with RMHC, including the RMHC Endowment at the Foundation, which provides grants for Ronald McDonald Houses that may not have ADPi nearby to support them. The Alpha Delta Pi Foundation distributes more than \$1,400,000 each year in contributions raised by Alpha Delta Pi chapters and alumnae associations for RMHC and other charities.





## A WAY OF LIFE

Membership in Alpha Delta Pi brings the privilege of lifetime involvement, and we encourage our members to remain active in our organization through participating in local alumnae associations, assisting chapters, and recommending women for membership in the form of Potential Member Recommendations.

Alpha Delta Pi is not four years; it's for life. Your daughter has joined a lifetime network of women who will support her throughout her academic pursuits and professional career. Our collegiate sisters become lifelong friends, sharing experiences throughout their lifetimes.

Our chapters are supported by alumnae volunteers through the local advisory and house corporation boards and international officer networks, and we encourage this involvement on all levels and according to each sister's time and talents.

### Chapter Advisory Boards

These alumnae support and mentor the chapter members and the chapter leadership team. The Advisory Board is responsible for supporting the development, implementation, and evaluation of the chapter's goals and plans.

### House Corporation Boards

Many chapters are fortunate to have a house, suite, dorm floor, or chapter room to live and/or meet in. Members of the House Corporation Board monitor and support chapter housing operations and work closely with the chapter women and campus housing staff to ensure a safe housing experience for our members.

### International Officers

These alumnae work on an International and District level to support multiple campuses and teams in executing the strategic plan of Alpha Delta Pi. They evaluate and maintain awareness of each chapter's ongoing goals. Our International Officers have extensive knowledge of Alpha Delta Pi's policies and procedures.

## PARENT COMMUNICATIONS

Alpha Delta Pi employs multiple communications channels with parents. Each semester, we send *The Parent Chronicle*, an e-newsletter with updates and important news, to parents whose daughter has submitted a current email address for her parent/guardian. We also publish *The Adelphean*, our printed and online magazine showcasing alumnae and collegiate achievements, news from our campuses, and issues facing our members. If your daughter has selected printed delivery, it will come to your home. Members who have chosen to "go green" as well as friends and family may read our magazine online through the homepage of [alphadeltapi.org](http://alphadeltapi.org).

Important information regarding the sorority and major projects—such as the COVID-19 disruption to operations—will always be available at [alphadeltapi.org](http://alphadeltapi.org). Our Parents page (located under the Collegians tab) is also a resource for timely content.





# PROGRAMMING

## Anti-Hazing

Rae Ann Gruver, an alumna member of Alpha Delta Pi's chapter at Clemson, and her husband, Steve, started the Max Gruver Foundation to bring an end to hazing after losing their son Max to a fraternity hazing incident at Louisiana State University. We partner with this Foundation each year during National Hazing Prevention Week for our Stop the Hazing campaign. All chapters are provided resources to educate themselves and host awareness events on their campus.

## Diversity & Inclusion

Alpha Delta Pi actively encourages a membership which represents a diverse population and does not discriminate in membership selection procedures. Grand Council named diversity and inclusion as a priority for the organization, and we will offer education and learning opportunities for chapters to ensure our sorority is an inclusive space for all members.

## Fraternal Health & Safety Initiative (FHSI)

Through FHSI, we have three educational programs available to be presented by a trained facilitator: Taking a Stand: Preventing Sexual Misconduct on Campus; Hazing Prevention and Intervention; and "Choices." These programs help members understand the harm and risks of choices they make and discuss tangible ways to build healthier cultures.

## Mental Health

Alpha Delta Pi recognizes that mental health has quickly become one of the most critical topics facing collegiate women today. We have prioritized supporting collegiate and alumnae volunteers in this area through Behind Happy Faces, an in-person program for collegiate chapters to provide tools to address mental health effectively.

## Safety & Risk Management

Alpha Delta Pi works to uphold the values and ethics of our organization by taking active steps to ensure the safety and well-being of our members. From bystander intervention training to programs around alcohol/drug abuse, hazing prevention/intervention, and mental illness, we as an organization do our best to ensure our members are equipped to manage risk and keep themselves and others safe throughout their collegiate experience and beyond.





## ALPHA EDUCATION

### An Alpha is a new member of Alpha Delta Pi

Our Alpha Member (New Member) Education is a six to ten week program based on our Creed which provides the basic educational foundation of Alpha Delta Pi.

Our new members will meet as a group each week with their Director of New Member Experience to foster friendships and sisterhood along with learning more about Alpha Delta Pi and their campus community.

Each Alpha Education session is tailored specifically for the needs of our new members and the group's development. These sessions are constantly reviewed and modified to ensure our members receive the best new member education experience.

#### "I Believe in Alpha Delta Pi"

Following signature of the Statements of Policy, the women are officially welcomed as new members of Alpha Delta Pi through the ritual of our Alpha Member Ceremony.

#### "The Adelphean Bonds of Fellowship"

Alpha Delta Pi's rich history is highlighted, as well as the history of the National Panhellenic Conference, leaving a lasting legacy and building a foundation for sisters yet to come.

#### "Alpha Delta Pi is a Way of Life"

New members are given further insight into our Creed, as it challenges each Alpha Delta Pi to become a well-balanced person by following the dictates of the four points symbolized by our diamond-shaped badge.

#### "The Responsibility to Do My Best"

Membership responsibilities reviewed during this session include the Chapter Academic Advancement Program and individual scholarship goal-setting, financial expectations, and lifetime involvement.

#### "Striving to Become a Well-Balanced Person"

Sisters review skills that can be learned and developed in each officer position, the approximate time commitment, and assess if their skills will be a good match for the office.

#### "Unselfish Service to Mankind"

The focus of this lesson is to educate our new members about how we put into action one of our core values—service to others.

#### "Lead Me to Achieve a Rich and Useful Life"

As members prepare to take the Initiation Exam, they will participate in an Initiation Preview Workshop so they will feel comfortable before and during the ceremony.



# FAQ

## HOW ARE DUES PAID?

Each member is expected to meet her financial obligations, and we have found that this essential life skill of managing a budget, early in a college career, allows our members to be more prepared for their post-graduate lives. In the event a member cannot meet her financial obligations, a payment plan may be outlined by the Chapter Finance Director. Chapter dues and housing fees (if applicable) are managed through OmegaFi, an easy-to-use online system that allows for convenient payments and invoice management. The Vice President of Finance for your daughter's chapter will share information for how to log in to OmegaFi and pay dues.

## WHERE CAN WE FIND ADPI GIFTS?

The 1851 Shop is Alpha Delta Pi's very own store with exclusive merchandise curated especially for our sisters. New items are added regularly. Find special treats for your daughter at [www.the1851shop.com](http://www.the1851shop.com).

## HOW CAN I SUPPORT MY DAUGHTER IN ADPI?

No matter if you were never in a fraternity or sorority or still volunteer regularly with your organization there are new things to learn as your student makes their decision. We ask that you be supportive and take advantage of all the resources provided by the university, the local chapter, and the International Organization. You can also be actively engaged in your daughter's experience; many chapters have activities during campus family weekends as well as Parent Clubs with various levels of involvement.

## WHO DO I CONTACT IF I HAVE A QUESTION?

Alpha Delta Pi values and encourages the involvement of friends and family of its members. However, as a private membership organization, we work to protect the privacy and rights of our members. As such, on matters of membership status, Standards Council or discipline issues, certain financial issues, and housing contracts, the member must provide her written permission for an Alpha Delta Pi representative to discuss her situation with her parent or family member. Alpha Delta Pi has a standard release form which, after it is signed by a member, permits a chapter advisor, International Officer, or staff member to discuss with a member's parent or family member the member's financial, membership, housing, or disciplinary situation. Ask your daughter to complete this form on Pride Online.



# WHAT DOES THAT MEAN?

## **Alpha (New) Member**

A member who has accepted a bid but has not participated in the initiation ceremony. This time is when she gets to know the members of the chapter, learn history and symbolism, and develop an understanding for the ideas and principles of the organization.

## **Big Diamond Sister**

An older member assigned to assist a new member.

## **Bid**

A formal invitation to join a sorority. A woman may accept only one.

## **Bid Matching**

A system for matching potential members with chapters during Primary Recruitment.

## **Chapter**

The collegiate group of a local, national, or international fraternity or sorority. Inter/national organizations often give chapters a name, usually a Greek letter or combinations of Greek letters and/or the state.

## **Chapter Advisor**

An alumna who maintains a close advisory relationship with a chapter and serves as a teacher, counselor and friend.

## **Continuous Open Bidding (COB)**

The term for the time when Panhellenic Council sororities may take new members outside the primary recruitment process.

## **Delta (Active) Member**

An ADPi collegiate member who has been initiated.

## **House Corporation**

A legal entity holding title to or leasing any real property (land and buildings) for a chapter's living/meeting purposes.

## **Initiation**

A formal ceremony in which an individual becomes a full member of the sorority.

## **International Organization**

A common way to refer to the larger sorority with a chapter on a college campus. For the business center of this organization, Executive Office is appropriate.

## **Legacy**

A woman whose mother, sister, grandmother, or great-grandmother is a member of Alpha Delta Pi.

## **National Panhellenic Conference (NPC)**

The national group of 26 women's sororities in North America. Representatives from each national sorority meet regularly to advocate for sororities, make common agreements about how Panhellenic sororities should function, and provide resources to collegiate and alumnae members.

## **Pi (Alumna) Member**

An ADPi who has graduated or permanently left school; plural is alumnae.

## **Pin/Badge**

Jewelry worn by an initiated member.

## **Potential New Member (PNM)**

A term used for a student who has shown interest in being recruited by a sorority or who has registered for the formal recruitment process.

## **Quota**

The number of new members that Panhellenic sororities may accept during primary recruitment. This is determined by the College Panhellenic based on the number of potential members participating in a given recruitment period and is not determined until after the Preference round of primary recruitment.

## **Recruitment**

The time when sororities select new members. This process is conducted informally throughout the year (COR) and formally in the beginning of a semester. Primary recruitment is organized and executed by the Panhellenic Executive Board.

## **Ritual**

A ceremonial event unique to each organization that plays out the ideals and principles of that organization. They are the same for every chapter of Alpha Delta Pi and are the time when members take an oath to uphold the values of that organization.

## **Total**

The allowable chapter size as determined by the College Panhellenic. Chapters under this number are allowed to participate in Continuous Open Bidding (COB).



IT'S NOT JUST FOUR YEARS.  
IT'S FOR LIFE!

## Alumnae Membership

### Networking

With well over 200,000 members across the world, Alpha Delta Pi truly is “a sisterhood from coast to coast with a friend in every town” as noted in our International Song. Our network of professional women provides connection to all members through our shared experiences. The international organization organizes periodic networking opportunities and panel discussions to allow members to learn from each other.

### Alumnae Associations

In 1851 at Wesleyan Female College, a tradition of excellence was established when Eugenia Tucker and her circle of friends set out to unite college women in the bonds of sisterhood. This tradition of excellence continues to be maintained through our alumnae members, who through their involvement within their individual associations, illustrate the principles upon which we were founded. Alumnae associations connect women from all chapters who live in a geographic location and provide opportunities for connection, socialization, support, and community service.

### Volunteering

There are many ways to be involved with Alpha Delta Pi as an alumna. We welcome our alumnae to serve as volunteers. From giving time to a chapter by facilitating a workshop, assisting with a chapter event like recruitment or initiation, or helping with philanthropic projects, to serving at a local level on a chapter advisory board or house corporation board, to becoming involved on a regional level by serving the sorority on a committee or as an International Officer, Alpha Delta Pi will match an alumna's skills and interests to open opportunities.



# Shop!

## the1851shop

### THE 1851 SHOP

The 1851 Shop is Alpha Delta Pi's very own store with exclusive merchandise curated especially for our sisters. New items are added regularly..

### THE DIAMOND BOX

Looking for unique, one-of-a kind Alpha Delta Pi merchandise? Look no further than The Diamond Box from The 1851 Shop! Each month you will receive a selection of Alpha Delta Pi merchandise valued at \$40 (shipping Included) designed by ADPis for ADPis! You may choose either the Collegiate or Alumna Package to have merchandise tailored specifically for you that will feature items that are not available on The 1851 Shop website. Each box will contain one clothing item along with several gift items. Subscriptions are available in one-, three-, and twelve-month options. Visit [www.the1851shop.com](http://www.the1851shop.com) for more information.



## HERFF JONES™

### HERFF JONES

Herff Jones has been providing jewelry to colleges across the nation since 1920. The Greek Division of Herff Jones is the official jeweler of Alpha Delta Pi, providing the sorority's official jewelry, including badges and guards. New or replacement badge and/or guard orders are placed through Herff Jones. To ensure orders are placed by members in good standing, please ask your daughter to log in to Pride Online to find the badge ordering link for initiated, collegiate, and alumnae members. Alpha members order through a separate badge ordering website.





# Welcome Home!

We look forward to connecting with parents and families throughout the year in our Parent Chronicle!



Ensure your ADPi has entered your email address on Pride Online to receive this digital newsletter.



Alpha Delta Pi  
BE THE FIRST